

REVISION TEST (2017-18)
SUBJECT- SOCIAL SCIENCE
GRADE - 8

Time allotted:

Maximum Marks-40

General Instructions:

- Attempt all the questions.
- Questions from serial number 1 to 6 are of 1 mark each.
- Questions from serial 7 to 11 are of 3 marks each.
- Questions from serial 9 & 10 are of 5 marks each.
- Question number 11 is of 4 marks.
- Attach the map inside your answer book.

I. V. SHORT ANS. TYPE QUESTIONS (6×1=6)

1. Name the city which has religious significance due to which it attracts people to settle there.
2. Name any three leaders of the revolt of 1857.
3. Why is labour easily available in India?
4. Name the states which share high courts.
5. Where did the first INC Session held?
6. Why the Non-Cooperation Movement was called off?
- 7.

II. SHORT ANSWER TYPE QUESTIONS (3×5=15)

7. 'The revolt of 1857 was a turning point for East India Company.' Support the statement.
8. "Drafting the constitution for a huge and diverse country like India was not an easy affair." Justify the statement.
9. Give reasons:
 - a. Commercial farming requires the use of more machines and money.
 - b. Agriculture is the primary economic activity in India.
 - c. Mixed Farming is practised in highly developed countries.

10. 'The Fundamental Rights are called the Corner stone of our Constitution.' Justify it.

11. "The joy of our country's independence came mixed with the pain." Justify the Statement.

III. LONG ANSWER TYPE QUESTIONS: (3×5=15)

12. List and explain changes that were introduced by British after they gained power over the country after 1857 revolt.
13. Estimate the role of Gandhi ji in the Indian freedom Struggle.
14. Write a short note on INC and mention its objectives also.

11. Mark the following on Political map of India:

(1X4=4)

- a. One rice producing state
- b. One tea producing state
- c. Kanpur
- d. Place of chauri- chaura incident

दोहराई पेपर (2017 - 18)

विषयः हिन्दी

कक्षा : आठवीं

निर्धारित समय 1 घण्टा

अधिकतम अंक : 40

निर्देश :

- 1) इस प्रश्न पत्र के चार खण्ड हैं क, ख, ग और घ ।
- 2) इस प्रश्न पत्र के सभी प्रश्नों के उत्तर देना अनिवार्य है ।
- 3) यथासंभव प्रत्येक खंड के उत्तर क्रमशः दीजिए ।

खण्ड क (अपठित बोध)

1प्रः निम्नलिखित अपठित गद्यांश को पढ़कर प्रश्नों के उत्तर दीजिए ।

4

रोम संसार का बहुत ही पुराना नगर है जिसकी राजधानी इटली है रोम में प्रवेश करने के लिए नदी पर बने सँकरे पुल पर होकर जाना पड़ता था । एक बार शत्रु सेना ने रोम पर आक्रमण कर दिया । रोम की सेना का एक अत्यंत वीर सैनिक था । होरेशस । वह अपने दो वीर साथियों के साथ शत्रु का मुकाबला करने के लिए पुल पर खड़ा हो गया । सँकरे पुल पर चार शत्रु सैनिक से अधिक एक साथ प्रवेश नहीं कर सकते थे । चार शत्रु सैनिक जैसे ही आगे बढ़े होरेशस ने उनका काम तमाम कर दिया । उधर रोमवासी लकड़ी का पुल काटने में लगे हुए थे और होरेशस शत्रुओं से युद्ध करने लगा हुआ था ।

प्रः रोम के लोग क्या काटने में व्यस्त थे ? रोम की राजधानी कौन सी है?

2

प्रः सँकरे पुल पर कितने सैनिक जा सकते थे ,रोम के वीर सैनिक कौन था?

1

प्रः सेना, शत्रु शब्दों के वचन बदलों

1

2प्रः निम्नलिखित अपठित पद्यांश को पढ़कर प्रश्नों के उत्तर दीजिए ।

बार-बार आती है मुझको मधुर याद बचपन तेरी

गया, ले गया ,तू जीवन की सबसे मस्त खुशी मेरी ।
 चिंता रहित खोलना खाना वह फिरना निर्भय स्वच्छंद
 कैसे भूला जा सकता है बचपन का अतुलित आनंद ।
 मैं बचपन को बुला रही थी, बोल उठी बिटिया मेरी
 नंदन वन सी फूल उठी वह ,छोटी सी कुटिया मेरी ।
 वह भोली सी मधुर सरलता, वह प्यारा जीवन निष्पाप
 क्या फिर आकर मिटा सकेगा तू मेरे मन का संताप ।

प्रः कवयित्री को बार-बार अपने बचपन की याद क्यों आ रही है?

2

प्रः कवयित्री किसे दोबारा पाने की इच्छा रखती है?

प्रः "मधुर" शब्द का विपरीत शब्द लिखिए ।

1

खण्डख (व्यवहारिक ज्ञान)

(10)

3प्रः नीचे दिए गए मुहावरों के अर्थ लिखिए ।

2

i) गंगा नहाना

ii) गले का हार

iii) चार सौ बीस

iv) खून सूखना

4प्रः निम्नलिखित वाक्य का भेद बताइए ।

2

क) आपकी यात्रा मंगलमय हो ।

ख) एक कटोरी दाल देना ।

5प्रः निम्नलिखित वाक्यांशों के लिए एक शब्द लिखिए ।

2

i) बिना वेतन के

ii) कम अक्ल वाला

6प्र० निम्न वाक्यों का पद परिचय लिखिए।

2

i) लड़का बहुत रोया है। (क्रिया विशेषण)

ii) मिठाई स्वादष्टि है। (विशेषण)

खण्ड ग (पाठ्य पुस्तक)

(15)

प्र०7 निम्नलिखित प्रश्नों के उत्तर दीजिए

प्र०1 गवरइया ने धुनिया के पास क्यों गई थी ? और उसके लिए उसने कितने दाम देने के लिए कहा? 2

प्र०2 'कामचोर' पाठ पर आधारित व्यक्ति को अपना काम खुद करने की आदत क्यों होनी चाहिए ? अपने शब्दों में बताओ। 2

प्र०3 बदलू को किस बात से चिढ़ थी? 2

प्र०4 कबीर के अनुसार माला फेरना ढोंग कैसे है ? 2

प्र०5 साँप ने बाज के बारे में क्या सोचा? 2

प्र०6 1857 के विद्रोह की ब्रिटेन में क्या प्रतिक्रिया हुई? 2

प्र०7 महाराजा रणजीत सिंह अद्भुत व्यक्ति थे? कैसे ? अपने शब्दों में लिखिए। 3

खण्डघ (लेखन 10)

प्र०17 दिए गए विषय पर 150 से 200 शब्दों में अनुच्छेद लिखिए :

5

(i) 'परिश्रम का महत्व' नीचे दिए गए संकेत बिंदुओं के आधार पर निबंध लिखिए।

परिश्रम सफलता की कुंजी, परिश्रम के लाभ, स्वास्थ्य के लिए आवश्यक, सारांश

प्र०19 किसी समाचार पत्र के संपादक को पत्र लिखकर बताइए कि आपके क्षेत्र में गुंडागर्दी दिन प्रतिदिन बढ़ती जा रही है। 5

REVISION PAPER (2017-18)

FINAL TERM

GRADE VIII (ENGLISH)

TIME ALLOTTED: 2 HOURS

MAX. MARKS: 40

General Instructions:

This question paper has 4 sections.

Read the questions very carefully.

All questions are compulsory.

SECTION A (READING)

(6 Marks)

THE GREAT WALL OF CHINA

- (1) The Great Wall is the world's longest human made structure, stretching over approximately 6400 kms from Shanaiguan in the East to Lopnur in the West. The Great Wall of China has been a very important landmark in China throughout history. It was remodeled by many historic dynasties of China for several reasons. It was constructed for protecting from northern invaders. The Great Wall began as independent walls for different states when it was first built and did not become the 'Great Wall' until the Qin Dynasty. After the unification of China in 221 BC, the first emperor of Qin Dynasty linked the walls of the three states in the north and formed the first Great wall. The Great Wall that can still be seen today was built during the Ming Dynasty.
- (2) The Great Wall of China is made of granite blocks, stone and sometimes brick. The width of the wall could fit five horse riders or ten foot soldiers walking shoulder to shoulder. One of the highest points of the Great Wall is 10.5 metres tall. Spaced at regular intervals are the watchtowers that appear every 90 – 180 metres. It is a tribute to the engineering skills of its builders that all the stone in this gigantic structure were perfect squares.

1. Read the passage carefully and choose the correct answer from the options given:

- A. The Great Wall of China that can still be seen today was built by
 - (a) Ming Dynasty
 - (b) Chin Dynasty

- (c) Qin Dynasty
- (d) Tang Dynasty
- B. The purpose of the Great Wall was
 - (a) to unite different parts of China
 - (b) to protect China from invaders
 - (c) to create a physical border of China
 - (d) to display great engineering skills
- C. The Great Wall is made up of
 - (a) Bricks and cement
 - (b) Stones and mortar
 - (c) Granite blocks, stones and bricks
 - (d) Marble and mortar
- D. The Great Wall is called so probably because of
 - (a) Its importance
 - (b) Its great size and engineering uniqueness
 - (c) The stone used in making it
 - (d) The different dynasties that made it
- E. The most likely purpose of the watchtowers was
 - (a) To view different parts of the wall
 - (b) To keep an eye on soldiers and their horses
 - (c) To view beautiful landscapes
 - (d) To keep an eye on enemy movement
- F. The most appropriate meaning of the word 'remodelled' is:
 - (a) Reconstruct
 - (b) Recollect
 - (c) Resize
 - (d) Revise

SECTION B (WRITING)

(12 Marks)

2. Imagine yourself to be Rahul. Write a diary entry expressing your feelings just before the beginning of your final examinations. **(4)**
3. Prepare a speech to be delivered in the school assembly about the role of students in the preservation and conservation of environment. **(8)**

SECTION C (GRAMMAR)

(10 Marks)

4. Fill the following blanks using the correct form of the verb given in the brackets. (5)

When we **(a)** (arrive) at the cinema hall, the movie was over and people **(b)**..... (leave) at that very moment. We **(c)**..... (understand) at once that we **(d)**..... (miss) the film. My cousin **(e)**..... (become) very frustrated. He said that he had been wanting to see the movie for a very long time.

- (a) Arrive, arrived, have arrived, has been arrived
- (b) Left, leaving, were leaving, had left
- (c) Understood, understand, has understood, have understood
- (d) Had missed, miss, missed, will miss
- (e) Becomes, became, had become, has become

5. In the passage given below, supply a Verb in agreement with its Subject. (5)

The cost of all the articles **(a)** risen. This happened because the jury **(b)** divided in their opinion. They had their own views. One or the other of those fellows **(c)** their own experience to share. The accountant and the cashier **(d)** also in a disagreement. Some said that ninety rupees **(e)** too much for the bag while the others disagreed.

SECTION D (LITERATURE)

(12 MARKS)

6. Read the extract and answer the following questions. (4 Marks)

And swallows calling with their shimmering sound

And frogs in the pool singing at night

And wild plum trees in tremulous white

Robins will wear their feathery fire

- i. Give an example of transferred epithet from the extract above.
- ii. What is the mood in which the above stanza is written?
- iii. Explain the term 'Feathery Fire'.
- iv. Why are all creatures in peace?

7. Answer any FOUR out of the following questions in about 30-40 words. (8)

- i. Give a description of the streets on which the English Policeman performs his duty?
- ii. Give examples of people who can feel safe under the English Policeman's 'protecting wings'?
- iii. The poem There Will Come Soft Rains demonstrates that the world still continues even when humans are not there. How?
- iv. Comment on the character of the Bishop.
- v. Why is Mr Mead different from the rest of the people living in that century?
- vi. How did Yudhisthira prove to be a just brother?

Revision Paper for session (Final Term) (2017-18)

Topic Covered:

- | | | |
|-------------------------|-------------------------------|----------------------------------|
| 1. Sound | 5. Pollution of air and water | 9. Electric current and circuits |
| 2. Metals and nonmetals | 6. Lightning | 10. Chemical communication |
| 3. Crop Production | 7. Earthquake | |
| 4. Friction | 8. Microorganisms | |

Subject: Science

Date:

Teacher:

Grade:VIII

Section:

Name of the student:

Max. Marks: 40

M.Obtained:

Read the instructions carefully

Section A carries 3 questions carrying one mark each

Section B carries 6 questions carrying two marks each

Section C carries 5 questions carrying three marks each

Section D carries 2 question carrying five marks each

SECTION A

Q1. Which part of ear vibrates by sounds?

Q2. Malaria is caused by _____.

Q3. Define Tilling.

SECTION B

Q4. Name the microorganisms which can fix atmospheric nitrogen in the soil.

Q5. What are the various pollutants present in air?

Q6. What precautions must be taken while coming down from a multi-storey building during an earthquake?

Q7. All metals do not corrode. Why?

Q8. Why is friction considered as "Evil" of all motions? Explain with examples.

Q9. Write the symbols of first 10 elements of periodic table.

SECTION C

Q10. Qutub Minar and Taj Mahal are the historical monuments which are deteriorating due to human activities. Explain.

Q11. What is Richter scale? How do we classify earthquakes based on magnitude on this scale?

Q12. Suppose that there are two samples of water, sample A shows conductivity while sample B does not. What are these two samples? What should be added to sample B so that it conducts electricity?

Q13.

Reactions of metals with oxygen

When a metal reacts with oxygen it will form a METAL OXIDE. This is what happens when a metal rusts or burns.

METAL + OXYGEN → METAL OXIDE

The diagram illustrates the reaction: 2Mg + O₂ → 2MgO. On the left, two green circles labeled 'Mg' and two pairs of blue circles labeled 'O' are shown. A red plus sign is between them. A red arrow points to the right, where two green circles labeled 'Mg' are each now bonded to a blue circle labeled 'O'.

Copy and complete the following reactions:

- 1) Magnesium + oxygen _____
- 2) Copper + oxygen _____
- 3) Calcium + oxygen _____
- 4) Iron + oxygen _____

Q14. How can rain water harvesting helps to conserve water?

SECTION D

Q15. Draw the Nitrogen cycle.

Q16. Draw a well labeled diagram of internal structure of a dry cell.

ਜਮਾਤ : ਅੱਠਵੀਂ

ਵਿਸ਼ਾ : ਪੰਜਾਬੀ

ਦੁਹਰਾਈ ਪ੍ਰੀਖਿਆ -2 (2017-18)

ਕੁੱਲ ਅੰਕ=40

ਭਾਗ (ੳ) ਗਿਆਨ ਅਤੇ ਵਿਚਾਰ (ਪੜ੍ਹਨ ਕੌਸ਼ਲ) (ਅਣਡਿੱਠਾ ਪੈਰਾ)

(2+ 1=3)

ਅੱਜ ਦਾ ਯੁਗ ਪਦਾਰਥ-ਵਾਦੀ ਯੁਗ ਹੈ। ਇਸ ਯੁਗ ਦੀਆਂ ਮਸ਼ੀਨਾਂ ਨੇ ਮਨੁੱਖ ਨੂੰ ਮਸ਼ੀਨ ਹੀ ਬਣਾ ਕੇ ਰੱਖ ਦਿੱਤਾ ਹੈ। ਹਰ ਇੱਕ ਦੀ ਦੌੜ ਪੈਸੇ ਮਗਰ ਲੱਗੀ ਹੈ। ਹਰ ਕੋਈ ਰਾਤੋਂ-ਰਾਤ ਅਮੀਰ ਬਣਨ ਲਈ ਸੋਚਦਾ ਹੈ। ਭਾਈਚਾਰੇ ਦੀ ਥਾਂ ਸੁਆਰਥ ਪ੍ਰਧਾਨ ਹੋ ਗਿਆ ਹੈ। ਮਨੁੱਖੀ ਪਿਆਰ ਘੱਟਦਾ ਜਾ ਰਿਹਾ ਹੈ। ਜਿਸ ਕੋਲ ਤਾਕਤ ਹੈ ਉਹ ਮਾੜੇ ਨੂੰ ਦੇਖ ਕੇ ਖੁਸ਼ ਨਹੀਂ। ਇਸ ਲਈ ਲੋਕਾਂ ਵਿੱਚ ਏਕਤਾ ਨਹੀਂ ਹੈ। ਦੇਸ਼ ਵਿੱਚ ਜਾਤ-ਪਾਤ, ਉੱਚ-ਨੀਚ ਦਾ ਭੇਦ-ਭਾਵ ਕੌਮੀ ਏਕਤਾ ਨਾ ਹੋਣ ਵਿੱਚ ਵੱਡਾ ਹਿੱਸਾ ਪਾ ਰਿਹਾ ਹੈ। ਉੱਚ-ਵਰਗ, ਨਿਮਨ-ਵਰਗ ਨੂੰ ਭੈੜੀ ਨਜ਼ਰ ਨਾਲ ਵੇਖਦਾ ਹੈ। ਇਸ ਤਰ੍ਹਾਂ ਕੌਮੀਅਤ ਦਾ ਜਜ਼ਬਾ ਅਲੋਪ ਹੋ ਰਿਹਾ ਹੈ।

ਉਪਰੋਕਤ ਪੈਰਾ ਪੜ੍ਹੋ ਤੇ ਹੇਠ ਲਿਖੇ ਪ੍ਰਸ਼ਨਾਂ ਦੇ ਸਹੀ ਉੱਤਰ ਲਿਖੋ:

1. ਅੱਜ-ਕੱਲ੍ਹ ਦੇ ਲੋਕਾਂ ਵਿੱਚ ਆਪਸੀ ਏਕਤਾ ਘੱਟਣ ਦਾ ਕੀ ਕਾਰਨ ਹੈ ?
2. ਇਸ ਪੈਰੇ ਦਾ ਢੁਕਵਾਂ ਸਿਰਲੇਖ ਲਿਖੋ।

(2) ਹੇਠ ਲਿਖਿਆ ਅਣਡਿੱਠਾ ਕਾਵਿ-ਟੋਟਾ ਪੜ੍ਹ ਕੇ ਪ੍ਰਸ਼ਨਾਂ ਦੇ ਉੱਤਰ ਲਿਖੋ:

(1.5+1.5=3)

ਦਿਵਾਲੀ ਮਨਾਓ ਸਾਲੋ ਸਾਲ, ਪ੍ਰਦੂਸ਼ਣ ਦਾ ਰੱਖੋ ਖਿਆਲ।

ਸਭਨਾਂ ਨੂੰ ਇਹ ਆਖ ਸਣਾਈਏ, ਆਤਿਸ਼ਬਾਜ਼ੀ ਨਾ ਚਲਾਈਏ।

ਪਰ ਬਿਜਲੀ ਦਾ ਸਰਫ਼ਾ ਕਰੀਏ, ਕੋਈ ਨਾ ਭੈੜੀ ਵਾਦੀ ਪਾਈਏ।

ਪ੍ਰ 1- ਪ੍ਰਦਸ਼ਣ ਵੱਧਣ ਤੋਂ ਕਿਵੇਂ ਰੋਕਿਆ ਜਾ ਸਕਦਾ ਹੈ ?

ਪ੍ਰ 2- ਸਾਰਿਆਂ ਨੂੰ ਕੀ ਸੁਨੇਹਾ ਦੇਣਾ ਚਾਹੀਦਾ ਹੈ ?

ਭਾਗ (ਅ) ਵਿਆਕਰਨ

(ਪ੍ਰਸ਼ਨ 1) ਬਹੁ-ਵਿਕਲਪੀ ਪ੍ਰਸ਼ਨ

(4×1=4)

1. 'ਸੀ' ਸ਼ਬਦ ਦਾ ਸਹੀ ਬਹ-ਵਚਨ ਚਣੋ:

ਓ. ਸਨ

ਮ. ਸਾਂ

ੲ. ਦੋਵੇਂ ਹੀਂ

2. ‘ਸੁੰਦਰਤਾ, ਅਰੋਗਤਾ’ ਸ਼ਬਦਾਂ ਵਿੱਚ ਲੱਗਾ ਸਹੀ ਪਿਛੇਤਰ ਚੁਣੋ :

ੳ. ਗਤਾ

ਅ. ਸੰਦਰ

ੲ. ਤਾ

3. 'ਉਜਾੜ' ਸ਼ਬਦ ਦਾ ਸਹੀ ਸਮਾਨਾਰਥਕ ਚੁਣੋ:

ੳ. ਸਹਿਮ

ਅ. ਸੁੰਨਸਾਨ

ੲ. ਹਕੀਕਤ

4. 'ਹਿਮਾਲਯ' ਸ਼ਬਦ ਦਾ ਸਹੀ ਸ਼ੁੱਧ ਰੂਪ ਚੁਣੋ:

ੳ. ਹਿਮਾਲਾ

ਅ. ਹਿਮਾਲਅ

ੲ. ਹਿਮਾਲਿ

(ਪ੍ਰਸ਼ਨ 2) ਸਧਾਰਨ ਪ੍ਰਸ਼ਨ

(6×1=6)

ਹੇਠ ਲਿਖੀਆਂ ਹਦਾਇਤਾਂ ਅਨੁਸਾਰ ਉੱਤਰ ਲਿਖੋ -

1. 'ਦੂਰੋਂ ਮੱਥਾ ਟੇਕਣਾ' ਮੁਹਾਵਰੇ ਦਾ ਅਰਥ ਲਿਖੋ ।
2. 'ਬਹੁਤ ਸ਼ਰਮਿੰਦਾ ਹੋਣਾ' ਅਰਥ ਦਾ ਸਹੀ ਢੁਕਵਾਂ ਮੁਹਾਵਰਾ ਲਿਖੋ।
3. ਭੂਤਕਾਲ ਕਿਸਮ ਦੀ ਇੱਕ ਉਦਾਹਰਨ ਲਿਖੋ।
4. ਸਥਾਨ-ਵਾਚਕ ਕਿਰਿਆ- ਵਿਸ਼ੇਸ਼ਣ ਦੀ ਕੋਈ ਇੱਕ ਉਦਾਹਰਨ ਲਿਖੋ।
5. ਯੋਜਕ ਦਾ ਸ਼ਾਬਦਿਕ ਅਰਥ ਕੀ ਹੈ ?
6. ਸੰਬੰਧਕ ਦੀਆਂ ਕਿੰਨੀਆਂ ਕਿਸਮਾਂ ਹਨ ?

ਭਾਗ (ੲ) ਪ੍ਰਭਾਵਸ਼ਾਲੀ ਲਿਖਣ ਕੌਸ਼ਲ

1. ਵੱਧਦੀ ਅਬਾਦੀ ਦੀ ਸੱਮਸਿਆ ਬਾਰੇ ਲੇਖ ਲਿਖੋ। (5)
2. ਆਪਣੇ ਮਿੱਤਰ ਨੂੰ ਗਰਮੀਆਂ ਦੀਆਂ ਛੁੱਟੀਆਂ ਇਕੱਠੇ ਬਿਤਾਉਣ ਲਈ ਪੱਤਰ ਲਿਖੋ। (5)
3. ਹੇਠਾਂ ਦਿੱਤੇ ਦ੍ਰਿਸ਼ ਨੂੰ ਵੇਖ ਕੇ 50-60 ਸ਼ਬਦਾਂ ਵਿੱਚ ਵਰਣਨ ਕਰੋ। (4)



ਭਾਗ (ਸ) ਪਾਠ-ਪੁਸਤਕ

1. ਹੇਠ ਲਿਖੇ ਪ੍ਰਸ਼ਨ ਦਾ ਉੱਤਰ ਸੰਖੇਪ ਵਿੱਚ ਲਿਖੋ। (2×1=2)

ਪ੍ਰਸ਼ਨ 1.- ਪ੍ਰਭਾਦਿਆਲ ਐਡਵੋਕੇਟ ਤੇ ਉਸਦਾ ਪਰਿਵਾਰ ਛੁੱਟੀਆਂ ਮਨਾਉਣ ਕਿੱਥੇ ਗਏ ਸਨ ?

ਪ੍ਰਸ਼ਨ 2.- ਦੀਪਾ ਦਾ ਪਿਤਾ ਜੀ ਕੀ ਕੰਮ ਕਰਦੇ ਸਨ?

2. ਹੇਠ ਲਿਖੇ ਪ੍ਰਸ਼ਨ ਦਾ ਉੱਤਰ 3-4 ਸਤਰਾਂ ਵਿੱਚ ਲਿਖੋ।

(2×1=2)

ਪ੍ਰਸ਼ਨ - 'ਨਵਾਂ ਚਾਨਣ' ਇਕਾਂਗੀ ਦਾ ਉਦੇਸ਼ ਕੀ ਹੈ ?

3. ਹੇਠ ਲਿਖੇ ਪ੍ਰਸ਼ਨ ਦਾ ਉੱਤਰ ਵਿਸਥਾਰ ਨਾਲ ਲਿਖੋ।

(3)

ਪ੍ਰਸ਼ਨ: ਅਧਿਆਪਕ ਨੇ ਪਹਿਲਾਂ ਤਾਂ ਦੀਪਾ ਨੂੰ ਬਹੁਤ ਡਾਂਟਿਆ ਪਰ ਬਾਅਦ ਵਿੱਚ ਉਸ ਪ੍ਰਤੀ ਹਮਦਰਦੀ ਕਿਵੇਂ ਪੈਦਾ ਹੋ ਗਈ?

‘ਸੂਰਜ ਉਦਾਸ ਹੈ’ਕਹਾਣੀ ਦੇ ਅਧਾਰ’ਤੇ ਉੱਤਰ ਵਿਸਥਾਰ ਵਿੱਚ ਲਿਖੋ।

4. ਕਦਰਾਂ-ਕੀਮਤਾਂ ’ਤੇ ਅਧਾਰਿਤ ਪ੍ਰਸ਼ਨ:

(3)

ਪ੍ਰਸ਼ਨ: ਅੱਜ-ਕੱਲ੍ਹ ਦੇ ਬੱਚਿਆਂ ਨੂੰ ਆਪਣੇ ਬਜ਼ੁਰਗ ਮਾਂ-ਬਾਪ ਬੋਝ ਲੱਗਦੇ ਹਨ ਤੇ ਉਹਨਾਂ ਨੂੰ ਉਹ ਬਜ਼ੁਰਗ ਆਸ਼ਰਮਾਂ ਵਿੱਚ ਭੇਜ ਦਿੰਦੇ ਹਨ।ਕੀ ਇਹ ਸਭ ਕੁਝ ਸਹੀ ਹੈ? ਤੁਸੀਂ ਇਸ ਗੱਲ ਨਾਲ ਕਿੰਨੇ ਕੁ ਸਹਿਮਤ ਹੋ ? ਆਪਣੇ ਵਿਚਾਰ ਲਿਖੋ ।



International School Award
2014-2017



REVISION TEST

Final Term (2017-18)

Subject: Mathematics

Grade: VIII

Time: 1 hrs

MM: 40Marks

Note: There are 15 questions in a question paper. All the questions are compulsory. Read the question paper carefully.

General instructions:

Section A consists of 3 questions each carries 1 mark

Section B consists of 3 questions each carries 2 marks

Section C consists of 5 questions each carries 3 marks

Section D consists of 4 questions each carries 4 marks

Section A

Q1. A person sells an article for Rs 550, gaining $\frac{1}{10}$ of its C.P. Find gain percent.

Q2. The length and breadth of a rectangular field are in the ratio 3:2. If the area of field is 3456m^2 , find the perimeter of the field.

Q3. Factorize: $4a^2 - 4a + 1$

$$1 \times 3 = 3$$

Section B

Q4. A shopkeeper allows a discount of 10% to his customers and still gains 20%. Find the marked price of an article which costs Rs 450 to the shopkeeper.

Q5. How many bricks of size 22cm X 10cm X 7cm are required to construct a wall 33m long, 3.5m high and 40cm thick, if cement and sand used in the construction occupy $\frac{1}{10}$ th part of the wall?

Q6. How many sides has a regular polygon, each angle of which is of measure 108° ?

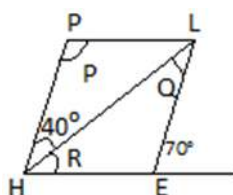
$$2 \times 3 = 6$$

Section C

Q7. Shyam deposited ₹ 7500 for 6 months in a bank at the rate of 8% interest compounded quarterly. Find the amount he received after 6 months.

Q8 Factorize by using suitable grouping: $4x^2 + 2y^2 + x^2y^2 + 8$

Q9 The adjacent figure HELP is a parallelogram. Find the angle measures of P, Q & R. State the properties you use to find them.



Q10. Samir bought a shirt for ₹ 336, including 12% VAT and a neck tie for ₹ 110 including 10% VAT. Find the printed price (without VAT) of shirt and neck tie together.

Q11. The measure of angles of a hexagon are x° , $(x-5)^\circ$, $(x-5)^\circ$, $(2x-5)^\circ$, $(2x-5)^\circ$, $(2x+20)^\circ$. Find the value of x .

$$3 \times 5 = 15$$

Section D

Q12. A new car costs ₹ 360000. Its price depreciates at the rate of 10% a year during the first two years and at the rate of 20% thereafter. What will be the price of car after 3 years?

Q13. i.) Factorize $2x^2 + 13x + 20$ and divide by $x + 4$

ii.) Divide $(x^2 + x - 56)$ by $(x + 8)$

Q14. An iron pipe 20cm long has exterior diameter equal to 25cm. If the thickness of the pipe is 1cm, find the whole surface of the pipe.

Q15. One of the diagonals of a rhombus is equal to one of its sides. Find the angles of the rhombus.

$$4 \times 4 = 16$$

Revision Paper Term-II (2017-2018)

Grade: 8

Subject: ICT

Time Allowed: 2hrs 30mins

Max Marks: 40

Instructions:

1. Number all your answers carefully.
2. Give examples wherever possible.
3. MCQ's have to be numbered carefully and only the right option has to be written.

Section- A

I. Answer the following questions in detail:

(4*2 = 8)

1. Write two characteristics of an unordered list.
2. Write a short note on PAN.
3. Explain any four attributes (along with their values) that can be added to the <table> tag.
4. Name the four properties visible in **Property Inspector** when you select a frameset.

II. Do as directed:

5. What will be the output of the following HTML code?

(4)

```
<ol type="a" start="10">
<li>January</li>
<li>February</li>
<li>March</li>
<li>April</li>
<li>May</li>
<li> June</li>
<li>July</li>
<li> August</li>
</ol>
```

6. Write the HTML code to create the following table.

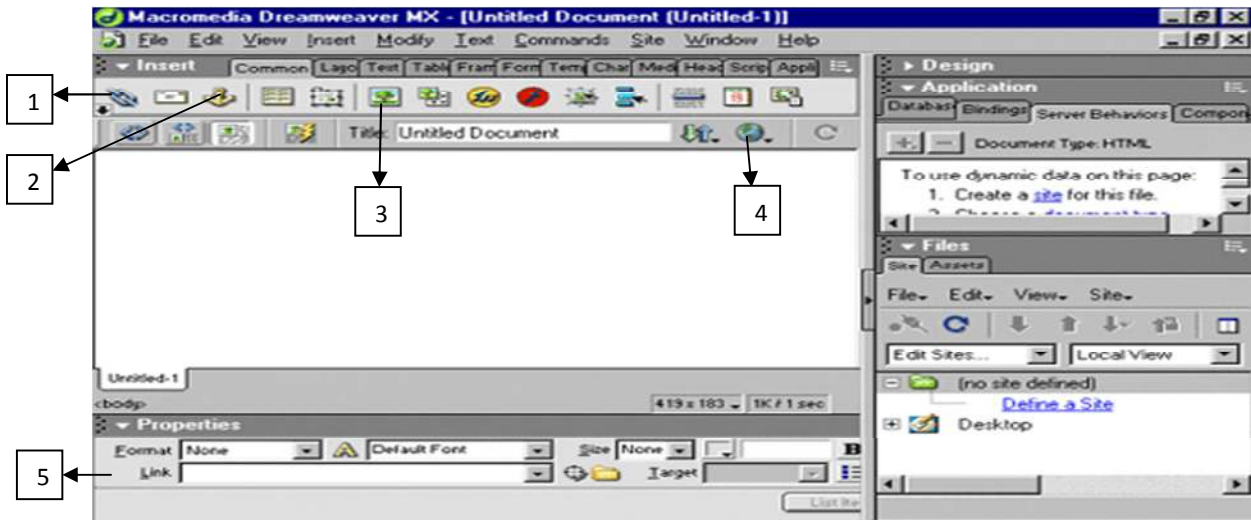
(4)

Roll No.	Name	Game
1	Apurva Mittal	Tennis
2	Khuwaish Verma	Badminton



7. Label the following pointed icons in the following picture.

(5)



8. Look at the following picture carefully and answer the following questions-

(4)



- Identify the above dialog box.
- Name the icon labeled as (1) in the diagram and write its function.
- What is the common term used for the icons labeled as (2).
- Write any two values of the target property other than the one shown in the diagram.

Section- B

1. State whether the following statements are true or false. Rewrite the correct statements.

(10*0.5 = 5)

- 1) JPEG is the best format for photographs, as it contains 10 million colors.
- 2) There are three types of lists that can be created in an HTML document.
- 3) The space between the cell contents and the cell border is called cellspacing.
- 4) E-governance is the service for buying and selling of products online.
- 5) The remote folder of a Dreamweaver site stores the files you are working on.
- 6) Rollover link is the color of a link when the cursor is on it.
- 7) The frameset file itself contains the HTML content that will be visible in a browser.
- 8) You cannot link to a Word or Excel document from a web page.
- 9) To display linked content in one frame of a frameset, set the link property of the frame name.
- 10) The hub is connected to the NIC by means of switch.

2. Give one word for the following statements:

(10*0.5 = 5)

- 1) Expand the term TCP.
- 2) The tag that we use to create a definition list item.
- 3) Any one attribute of <tr> tag.
- 4) The value that the BORDER attribute should have to remove the HTML table border.
- 5) A panel that lets you manage files/folders on a local machine as well as on a remote server.
- 6) The text that takes you to some other web page when you click on it.
- 7) A set of linked documents related to a particular topic.
- 8) The key that you press to select the frame in Dreamweaver Design view.
- 9) A modem fixed within a computer is known as.
- 10) Any one property of <frameset> tag.

Section-C

I. Choose the correct answer (MCQ) :

(10*0.5 = 5)

1. Which of the following is not an attribute of the IMG tag in HTML?

- | | |
|-----------|------------------|
| a) Align | c) Width |
| b) Border | d) None of these |

2. In HTML, LI stands for

- | | |
|----------------|------------------|
| a) Linked Item | c) List Item |
| b) List Image | d) None of these |

3. The linking of two or more computers so that they are able to exchange information is called.

- | | |
|-------------|---------------------|
| a) Protocol | c) Computer Network |
| b) ICT | d) None of these |

4. What are the different types of links possible on a web page or Web site?

- | | |
|------------------------------|-------------------|
| a) Inward links | c) Scripted links |
| b) Internal and Global links | d) Outward link |

5. Which is not a part of the Dreamweaver window?

- | | |
|--------------------|-------------------------|
| a) Document window | c) Design window |
| b) Panel | d) Properties Inspector |

6. Which Dreamweaver panel is used for working with web site files?
- a) Files
 - b) CSS
 - c) Frames
 - d) Tag
7. How can you view the web page in a browser while working in Dreamweaver?
- a) Press F10
 - b) Press F12
 - c) Press 11
 - d) None of these
8. What do we call a web page with three frames showing independent HTML files?
- a) Frameset
 - b) Regions
 - c) Division
 - d) Window
9. A semi-private network that also uses Internet protocols and technology is named as-
- a) Extranet
 - b) Intranet
 - c) Network
 - d) Packets
10. What is the default value for the SCROLLING attribute of the <frame> tag?
- a) YES
 - b) AUTO
 - c) NO
 - d) None of these