

**REVISION PAPER (2017-18)**

**Grade VIII**

**TIME ALLOTTED: 1.5 HRS.**

**ENGLISH**

**MAX. MARKS: 40**

**General Instructions:**

**This question paper has 4 sections. Read the instructions very carefully. All the sections are compulsory.**

**SECTION A (READING)**

**(6 Marks)**

(1) If you're addicted to coffee, and doctors warn you to quit the habit, don't worry and keep relishing the beverage, because it's not that bad after all! In fact, according to a new study, the steaming cup of java even beat fruits and vegetables as the primary source of antioxidants. The study by the University of Scranton states that coffee is the number one source of antioxidants in American diet, and both caffeinated and decaf versions appear to provide similar antioxidant levels.

(2) "Americans get more of their antioxidants from coffee than any other dietary source. Nothing else comes close to it" said the study's lead researcher, Doctor Joe Vinson, adding that high antioxidant level in food and beverages don't necessarily translate into levels found in the body. Antioxidants in general have been linked to a number of potential health benefits, including protection against heart disease and cancer, but Vinson said that the benefits ultimately depend on how they are absorbed and utilized in the body.

(3) The researchers analyzed the antioxidant content of more than 100 different food items, including vegetables, fruits, nuts, spices, oils and common beverages. The data was compared to an existing US Department of Agriculture database on the contribution of each type of food item to the average estimated US per capita consumption.

(4) The results were surprising. Coffee came out on the top, on the combined basis of both antioxidants per serving size and frequency of consumption. It outranked popular antioxidant sources like tea, milk, chocolate and cranberries.

(5) Of all the foods and beverages studies, dates actually have the most antioxidants of all based solely on serving size, but since dates are not consumed at anywhere the level of coffee, the drink comes as the top source of antioxidants, Vinson said.

(6) Besides keeping you alert and awake, coffee has been linked to an increasing number of potential health benefits, including protection against liver and colon cancer, type II diabetes, and Parkinson’s disease, according to some recently published studies.

(7)The researchers, however, advised that one should consume coffee in moderation, because it can make you jittery and cause stomach pains.

- (i) What is the good news about Coffee? (1)
- (ii) “Nothing else comes close to it.” (Para 2). “it” in the line refers to? (1)
- (iii) Are antioxidants beneficial? What does the benefits depend upon? (2)
- (iv) Find words from the passage which almost mean the opposite of the following:
  - a. Hazards(Para 1-2)                      b. excess (Para 6-7) (1)
- (v) List two potential health benefits of coffee? (1)

### SECTION B (WRITING)

(12 Marks)

4. Write a Debate on the topic Animal Teasing should be banned. You are a student of grade VIII and have to present this debate in a school competition. (8)

5. You are Vivek. You have received a telephonic call for your friend Rajesh from one of his clients Mr Satish, that the meeting fixed for 5<sup>th</sup> has been postponed to 9<sup>th</sup> of August at 9 a.m. in his chamber. He added that he should also carry his laptop. Write a message in not more than 30 words. (4)

### SECTION C (GRAMMAR)

(10 Marks)

6. In the passage given below, supply a Verb in agreement with its Subject. (5)

The cost of all the articles (a) ..... risen. This happened because the jury (b) ..... divided in their opinion. They had their own views. One or the other of those fellows (c) ..... their own experience to share. The accountant and the cashier (d) ..... also in a disagreement. Some said that ninety rupees (e) ..... too much for the bag while the others disagreed.

7. Convert the given dialog in Reported Speech. (5)

Christopher: Hello Betty.

Betty: Oh Hi Christopher. When did you come?

Christopher: I just came to the party. Do you want to dance?

Betty: Of Course. Let's go there.

Christopher: Has John arrived?

Berry: No. We all are waiting for him.

Christopher: Even I am eager to meet him.

Betty: Yes, we all are. Let's have food till he comes.

Christopher: Sure Betty.

#### SECTION D (LITERATURE)

(12 MARKS)

**13. Read the passage and answer the questions:**

**(4)**

"After he had read what was scribbled on that paper by the Rasseldar, he patted me on the back and grunted like a happy ox."

- (i) From which story is the extract taken?
- (ii) Who is 'he' and 'me' in the lines above?
- (iii) Mention the reason why 'he' patted the narrator on the back?
- (iv) Who is compared to 'a happy ox'?

**14. Answer any FOUR out of the following questions in about 30-40 words.**

**(8)**

- (i) We are told that the house is 'shut and still' but in the next stanza the poet says that the walls are broken. How can you explain the contradiction?
- (ii) The poem *The Grass So Little Has to Do* contains examples of Imagery. Give one example from the poem and which imagery does it contain.
- (iii) *Oliver Asks for More* describes the helplessness of an orphan. How does that boy try to overcome that helplessness?
- (iv) What did Bishan Singh bring from the market and for whom? What happened to those things?
- (v) What kind of behavior did the child-narrator experience in the hostel in the story *Difficult Days, Difficult Years*?

दोहराई पेपर 2017-18

विषय हिन्दी

कक्षा आठवीं

कुल अंक - 40

प्रश्न 1 निम्नलिखित अपठित गद्यांश को पढ़कर प्रश्नों के उत्तर दीजिए।

(5)

उपवास रखना केवल धार्मिक विधि -विधान या कर्मकांड का अंग ही नहीं है। उपवास-व्रत भारतीय संस्कृति में पूर्ण स्वास्थ्य के सूत्र हैं। ऋतु परिवर्तन के समय व्रत इसलिए रखे जाते हैं कि बदलते मौसम में कई किस्म की बीमारियाँ आती हैं। बीमारियों से लड़ने के रोग -प्रतिरोधक शक्ति तभी प्राप्त होगी, जब शारीरिक और मानसिक शुद्धता होगी इसी से जीवन शक्ति भी प्राप्त होती है, जिससे बल व बुद्धि का बराबर संतुलन बना रहता है। उपवास के दौरान शरीर के पाचन -संस्थान को पूर्णरूप से विश्राम मिलता है तथा शरीर में विद्यमान पुराने खाद्य अवशेष तथा दूषित पदार्थ नष्ट होकर मल के द्वारा बाहर निकल जाते हैं। गलत खाद्य पदार्थ ही विजातीय द्रव्य यानी विष का काम करते हैं। इस विष को जब शरीर रोग द्वारा निकालने का प्रयत्न करता है तो भूख स्वतः समाप्त हो जाती है। भोजन लेने से तीव्र निष्कासन क्रिया रूक जाती है। भूख ना रहने पर भोजन ना किया जाए तो पूर्णरूप से शारीरिक सफाई होकर रोग का कारण जड़ से समाप्त हो जाता है। उसके पश्चात नियमित तथा उपयुक्त उचित आहार देने पर रागि के लौटने की आशंका नहीं रहती।

- 1 व्रत-उपवास का ऋतु परिवर्तन से क्या संबंध है?
- 2 उपवास रखना स्वास्थ्य के लिए किस प्रकार हितकर माना गया है?
- 3 कभी-कभी भूख लगना अपने आप समाप्त कैसे हो जाता है?
- 4 रोग -प्रतिरोधक शक्ति कब प्राप्त होगी?
- 5 योजक शब्द चुनकर लिखिए।

प्रश्न 2 निम्नलिखित अपठित पद्यांश को पढ़कर प्रश्नों के उत्तर दीजिए।

(5)

मैं मज़दूर ,मुझे देवों की बस्ती से क्या?

अगणित बार धरा पर मैंने स्वर्ग बनाए।

अंबर पर जितने तारे, उतने वर्षों से

मेरे पुरखों ने धरती का रूप सँवारा।

धरती को सुंदरतम करने की ममता में

विता चुका है कई पीढ़ियों वंश हमारा ।  
और अभी आगे आने वाली सदियों में  
मेरे वंशज धरती का उद्धार करेंगे ।  
इस प्यारी धरती के हित में ही लाया था ।  
हिमगिरि चीर सुखद गंगा की निर्मल धारा ।  
मैंने रेगिस्तानों की रेती धो-धोकर  
बंध्या धरती पर भी स्वर्णिम पुष्प खिलवाए ।

- 1 मज़दूर को देवों की बस्ती से कोई मतलब क्यों नहीं है?
- 2 धरती पर मज़दूर स्वर्ग कैसे बनाता है?
- 3 भविष्य के निर्माण में मज़दूर अपनी क्या भूमिका देखता है?
- 4 गंगा की चर्चा मज़दूर गर्व के साथ क्यों करता है?
- 5 जातिवाचक शब्द चुनकर लिखिए ।

प्र:3 निम्नलिखित प्रश्नों के उत्तर लिखिए ।

(10)

प्र: 'चिट्ठियों की अनूठी दुनिया' पाठ के आधार पर बताइए कि पत्र -व्यवहार की परंपरा भारत में बहुत पुरानी है । अपने शब्दों में विस्तारपूर्वक लिखिए ।

प्र: 'जब सिनेमा ने बोलना सीखा ' जब पहली बोलती फिल्म प्रदर्शित हुई तो उसके पोस्टरों पर कौन -से वाक्य छापे गए? उस फिल्म में कितने चेहरे थे?

प्र: मनको की माला के विषय में कबीर जी के क्या विचार हैं?'कबीर की साखियाँ' के आधार पर वर्णन करो ।

प्र: 'यह सबसे कठिन समय नहीं ' यदि आपके जीवन में कठिन समय आ जाए तब आप उस कठिन समय का सामना किस प्रकार करेंगे? विस्तारपूर्वक उत्तर दीजिए ।

प्र: ' भगवान के डाकिए 'कविता के आधार पर बताइए कि प्रकृति किसी में भेदभाव नहीं करती?तर्क सहित समझाइए ।

(4)

प्र: कौटिल्य का अर्थशास्त्र महत्वपूर्ण क्यों है? उसमें किन-किन विषयों का उल्लेख किया गया है?

अथवा

प्रः जैन धर्म व बौद्ध धर्म के संस्थापक कौन थे? उनकी कोई दो -दो शिक्षाओं का वर्णन कीजिए।

प्रः4 निम्नलिखित प्रश्नों के उत्तर लिखिए। (11)

1 समस्तपद लिखिए- नव रतनों का समूह, गंगा का जल 2

2 निम्नलिखित में समस्तपदों के समास का भेद बताओ। 1

i) जेब के लिए घड़ी।

क) तत्पुरुष समास      ख) कर्मधारय समास      ग) बहुव्रीहि समास

प्रः 5 निम्नलिखित समस्तपदों का विग्रह कीजिए

i) चक्रधर 2

ii) पंचानन

प्रः 6 निम्नलिखित वाक्यों में रेखांकित शब्दों के अन्य कोई उपयुक्त पर्यायवाची शब्द लिखिए। 2

i) अचानक चारों ओर हवा चलने लगी।

ii) बाग में भिन्न-भिन्न प्रकार के फूल खिले हैं।

प्रः 7 निम्नलिखित काव्य पंक्तियों में पद परिचय बताइए। 2

i) राहुल अच्छा लड़का है।

ii) वह गाय बहुत दूध देती है।

प्रः 8 निम्नलिखित वाक्यों में अलंकार का भेद बताओ। 2

i) अनुप्रास अलंकार का उदाहरण लिखिए।

ii) मानवीकरण अलंकार का उदाहरण लिखिए।

प्रः 9 थानाध्यक्ष को अपनी कार चोरी होने की रिपोर्ट लिखवाते पत्र लिखिए। 5

**REVISION TEST**

**MATHEMATICS (2017 - 18)**

**CLASS –VIII (HALF YEARLY)**

**Time: 1:30 Hour**

**M.M. 40**

**GENERAL INSTRUCTIONS**

1. All questions are compulsory.
2. Section A consists of 3 questions carrying 1 mark each.
3. Section B consists of 3 questions carrying 2 marks each.
4. Section C consists of 5 questions carrying 3 marks each.
5. Section D consists of 4 questions carrying 4 marks each.

**Section A**

**Each Question carries 1 mark.**

Q1. Write the rational numbers from the list which are also the natural numbers.

$$\frac{1}{4}, \frac{1}{4}, \frac{1}{4}, \frac{7}{5}, \frac{6}{5}, \frac{5}{5}, \frac{3}{2}, \frac{4}{2}, \frac{5}{2}$$

Q2. A box of stationery items has 6 pencils and 4 rubbers. One piece of these items is removed at random. Calculate the probability that the item removed will be

- i.) A rubber
- ii.) A pencil

Q3. Write like terms from  $2Y^2$ ,  $2Y$ ,  $2Y^3$ ,  $-5Y$ ,  $11Y^4$

**Section B**

**Each Question carries 2 marks.**

Q4. What should be added to  $x^2+5x-6$  to get  $x^3-2x^2+4x-5$  ?

Q5. Solve:  $\frac{2x+5}{3} = \frac{3x-1}{4}$

Q6. The product of two rational numbers is  $-7$ . If one of the numbers is  $-10$ , find the other.

## Section C

**Each Question carries 3 marks.**

Q7. Using appropriate properties, find  $\frac{2}{3} \times \frac{-5}{7} + \frac{7}{3} + \frac{2}{3} \times \frac{-2}{7}$

Q8. The amounts of various agriculture products produced by a state in a year are as given in the table below:

Agricultural product	Wheat	Rice	Maize	Millet	Sugarcane
Production (in thousands)	1500	900	600	400	200

Draw a pie chart to represent the data. Use different columns to shade the different sectors.

Q9. Draw a double bar graph to show the population of males and females in 5 villages A, B, C, D and E (population in thousands)

Villages	A	B	C	D	E
Females	50	20	30	45	15
Males	55	30	20	40	35

Q10. The sum of the digits of a two digit number is 7. The number obtained by interchanging the digits exceeds the original number by 27. Find the number.

Q11. Use a suitable identity to get the following product:

$$\left(5a - \frac{1}{2}\right) \left(5a + \frac{1}{2}\right)$$

## Section D

**Each Question carries 4 marks.**

Q12. The perimeter of a triangle is  $8m^2 - 4m + 9$  and two of its adjacent sides are

$$m^2 - 2m + 1 \text{ and } 3m^2 - 5m + 3. \text{ Find third side of triangle.}$$

Q13. A man left one-fourth of his property to his daughter, One-third to his son, and the remaining Rs 20,000 to his wife. How much money did the man leave? Which value is depicted here?



Q14. The pulse rate per min of 30 persons was recorded as given below:

61, 76, 72, 73, 71, 66, 78, 73, 68, 81, 78, 63, 72, 75, 80, 68, 75, 62, 71, 81, 73, 60, 79, 72, 73, 74, 71, 64, 76, 71.

Construct a frequency table using class intervals of equal width, one class interval being 60 – 65 and hence make a histogram.

Q15. The table shows the portion of some common materials that are recycled.

MATERIAL	RECYCLED
Paper	$\frac{5}{1}$
Aluminium Cans	$\frac{5}{8}$
Glass	$\frac{2}{5}$
Scrap	$\frac{3}{4}$

- (a) Is the rational number expressing the amount of paper recycled more than  $\frac{1}{2}$  or less than  $\frac{1}{2}$ ?
- (b) Which items have a recycled amount less than  $\frac{1}{2}$ ?
- (c) Is the quantity of aluminium cans recycled more (or less) than half of the quantity of aluminium cans?

ਜਮਾਤ : ਅੱਠਵੀਂ

ਵਿਸ਼ਾ : ਪੰਜਾਬੀ

ਦੁਹਰਾਈ ਪ੍ਰੀਖਿਆ -1 (2017-18)

ਕੁੱਲ ਅੰਕ=40

ਭਾਗ (ੳ) ਗਿਆਨ ਅਤੇ ਵਿਚਾਰ (ਪੜ੍ਹਨ ਕੌਸ਼ਲ) (ਅਣਡਿੱਠਾ ਪੈਰਾ)

(9)

ਅੱਜ- ਕੱਲ੍ਹ ਦੇ ਨੌਜਵਾਨਾਂ ਦਾ ਸੁਪਨਾ ਬਣ ਗਿਆ ਹੈ- ਵਿਦੇਸ਼ਾਂ ਵਿੱਚ ਜਾਣਾ। ਉਹ ਸ਼ਾਇਦ ਸੋਚਦੇ ਹਨ ਕਿ ਉੱਥੇ ਪੈਸਾ ਆਸਾਨੀ ਨਾਲ ਕਮਾਇਆ ਜਾ ਸਕਦਾ ਹੈ। ਘਰ ਵੇਚ ਕੇ ਅਤੇ ਜਾਇਦਾਦਾਂ ਵੇਚ ਕੇ ਇਹ ਨੌਜਵਾਨ ਉੱਪਰ ਜਾਣ ਲਈ ਕਾਹਲੇ ਪੈ ਜਾਂਦੇ ਹਨ ਅਤੇ ਗਲਤ ਲੋਕਾਂ ਦੇ ਧੱਕੇ ਚੜ੍ਹ ਕੇ ਪੈਸੇ ਅਤੇ ਸਮੇਂ ਦੀ ਬਰਬਾਦੀ ਕਰਦੇ ਹਨ। ਬਹੁਤ ਸਾਰੇ ਅਜਿਹੇ ਨੌਜਵਾਨ ਫੜ੍ਹੇ ਵੀ ਜਾਂਦੇ ਹਨ ਅਤੇ ਦੂਜੇ ਦੇਸ਼ਾਂ ਦੀਆਂ ਜੇਲ੍ਹਾਂ ਵਿੱਚ ਮੌਤ ਤੋਂ ਬਦਤਰ ਜ਼ਿੰਦਗੀ ਬਤੀਤ ਕਰਦੇ ਹਨ। ਦੁਬਈ, ਲੀਬੀਆ, ਲੈਬਨਾਨ, ਸਾਊਦੀ ਅਰਬ ਵਰਗੇ ਦੇਸ਼ਾਂ ਵਿੱਚ ਅਜਿਹੇ ਨੌਜਵਾਨ ਰੁਲ ਰਹੇ ਹਨ। ਕਈ ਵਾਰ ਨੌਜਵਾਨਾਂ ਨੂੰ ਵਿਦੇਸ਼ਾਂ ਵਿੱਚ ਭੇਜਣਾ ਮਾਪਿਆਂ ਦੀ ਮਜ਼ਬੂਰੀ ਵੀ ਹੁੰਦੀ ਹੈ ਕਿਉਂਕਿ ਬੇਰੁਜ਼ਗਾਰੀ ਕਾਰਨ ਜਦੋਂ ਇੱਥਰ ਨੌਕਰੀਆਂ ਨਹੀਂ ਮਿਲਦੀਆਂ ਤਾਂ ਆਰਥਕ ਤੰਗੀ ਕਾਰਨ ਮਾਪੇ ਇੰਨ੍ਹਾਂ ਨੂੰ ਵਿਦੇਸ਼ ਭੇਜਣ ਲਈ ਮਜ਼ਬੂਰ ਹੁੰਦੇ ਹਨ। ਇਹ ਨੌਜਵਾਨ ਆਪਣੇ ਦੇਸ਼ ਵਿੱਚ ਛੋਟਾ- ਮੋਟਾ ਕੰਮ ਕਰਨ ਲਈ ਤਿਆਰ ਨਹੀਂ ਹੁੰਦੇ ਅਤੇ ਵਿਦੇਸ਼ਾਂ ਵਿੱਚ ਜਾ ਕੇ ਘਟੀਆ ਤੋਂ ਘਟੀਆ ਕੰਮ ਕਰਨ ਲਈ ਤਿਆਰ ਹੋ ਜਾਂਦੇ ਹਨ, ਕਿਉਂਕਿ ਪੱਕੇ ਨਹੀਂ ਹੁੰਦੇ, ਇਸ ਲਈ ਹਰ ਕੋਈ ਇਹਨਾਂ ਦਾ ਸ਼ੋਸ਼ਣ ਕਰਦਾ ਹੈ। ਵੱਧ ਕੰਮ ਲੈ ਕੇ ਘੱਟ ਪੈਸੇ ਦਿੱਤੇ ਜਾਂਦੇ ਹਨ

ਉਪਰੋਕਤ ਪੈਰਾ ਪੜ੍ਹੋ ਤੇ ਹੇਠ ਲਿਖੇ ਪ੍ਰਸ਼ਨਾਂ ਦੇ ਸਹੀ ਉੱਤਰ ਲਿਖੋ:

1. ਅੱਜ-ਕੱਲ੍ਹ ਦੇ ਨੌਜਵਾਨਾਂ ਦਾ ਸੁਪਨਾ ਕੀ ਹੈ ?
2. ਉਹ ਬਾਹਰ ਜਾਣ ਲਈ ਕੀ ਕੁੱਝ ਕਰ ਰਹੇ ਹਨ ?
3. ਮਾਪਿਓਂ ਬੱਚਿਆਂ ਨੂੰ ਵਿਦੇਸ਼ ਕਿਉਂ ਭੇਜ ਦਿੰਦੇ ਹਨ ?
4. ਵਿਦੇਸ਼ਾਂ ਵਿੱਚ ਕਿਨ੍ਹਾਂ ਲੋਕਾਂ ਦੁਆਰਾ ਇਹਨਾਂ ਨੌਜਵਾਨਾਂ ਦਾ ਸ਼ੋਸ਼ਣ ਕੀਤਾ ਜਾਂਦਾ ਹੈ ਤੇ ਕਿਉਂ?
5. ਇਸ ਪੈਰੇ ਦਾ ਢੁਕਵਾਂ ਸਿਰਲੇਖ ਲਿਖੋ।

(2) ਹੇਠ ਲਿਖਿਆ ਅਣਡਿੱਠਾ ਕਾਵਿ-ਟੋਟਾ ਪੜ੍ਹ ਕੇ ਪ੍ਰਸ਼ਨਾਂ ਦੇ ਉੱਤਰ ਲਿਖੋ:

(3 × 2=6)

ਪਿੰਡ ਰਹੇ ਨਾ ਰਹਿਣ ਦੇ ਕਾਬਿਲ, ਯੋਗ ਰਹੇ ਨਾ ਸ਼ਹਿਰ।

ਇਸ ਧਰਤੀ ਦੇ ਕਣ-ਕਣ ਅੰਦਰ, ਫੈਲ ਗਿਆ ਹੈ ਜ਼ਹਿਰ।

ਸ਼ੋਰ-ਸ਼ਰਾਬਾ, ਭੀੜ-ਭੜੱਕਾ, ਐਨੀ ਆਵਾਜਾਈ।

ਹਰ ਬੰਦੇ ਦਾ ਜੀਣਾ ਔਖਾ, ਇਸ ਹਾਲਤ ਵਿੱਚ ਭਾਈ।

ਕਿੰਨੀ ਦੇਰ ਸਹਾਂਗੇ, ਰੌਲੇ-ਰੱਪੇ ਦਾ ਇਹ ਕਹਿਰ।

ਪ੍ਰ 1- ਕਿਹਨਾਂ ਕਾਰਨਾਂ ਕਰਕੇ ਲੋਕਾਂ ਦਾ ਜੀਣਾ ਮੁਸ਼ਕਲ ਹੁੰਦਾ ਜਾ ਰਿਹਾ ਹੈ ?

ਪ੍ਰ 2- ਪ੍ਰਦੂਸ਼ਣ ਕਿਵੇਂ ਅਤੇ ਕਿਉਂ ਫੈਲਦਾ ਜਾ ਰਿਹਾ ਹੈ ?

ਪ੍ਰ 3- ਪ੍ਰਦੂਸ਼ਣ ਤੋਂ ਬਚਣ ਲਈ ਸਾਨੂੰ ਕੀ ਕਰਨਾ ਪਵੇਗਾ ?

### ਭਾਗ (ਅ) ਵਿਆਕਰਨ

#### (ਪ੍ਰਸ਼ਨ 1) ਬਹੁ-ਵਿਕਲਪੀ ਪ੍ਰਸ਼ਨ

(3×1=3)

1. 'ਗੱਭਰੂ' ਸ਼ਬਦ ਦਾ ਸਹੀ ਇਸਤਰੀ ਲਿੰਗ ਚੁਣੋ:

ੳ. ਕੁੜੀ

ਅ. ਮੁਟਿਆਰ

ੲ. ਦੁਲਹਨ

2. 'ਖੱਟੀ' ਸ਼ਬਦ ਦਾ ਸਹੀ ਅਰਥ ਚੁਣੋ :

ੳ. ਕਮਾਈ

ਅ. ਕਟਾਈ

ੲ. ਕੁਸ਼ਤੀ

3. 'ਸਹਿ' ਅਗੇਤਰ ਲੱਗਾ ਸ਼ਬਦ ਚੁਣੋ:

ੳ. ਸਹਿਮ

ਅ. ਸਹਿਣਾ

ੲ. ਸਹਿਮਤ

#### (ਪ੍ਰਸ਼ਨ 2) ਸਧਾਰਨ ਪ੍ਰਸ਼ਨ

(3×1=3)

ਹੇਠ ਲਿਖੀਆਂ ਹਦਾਇਤਾਂ ਅਨੁਸਾਰ ਉੱਤਰ ਲਿਖੋ -

1. 'ਟਕੇ ਵਰਗਾ ਜਵਾਬ ਦੇਣਾ' ਮੁਹਾਵਰੇ ਦਾ ਅਰਥ ਲਿਖੋ ।

2. ਮੇਰੇ ਮਾਮਾ ਜੀ ਦੀ ਦੁਕਾਨ ਸ਼ਹਿਰ ਦੇ ਵਿਚਕਾਰ ਹੈ । ( ਸੰਬੰਧਕ ਚੁਣੋ ਤੇ ਉਸ ਦੀ ਕਿਸਮ ਲਿਖੋ । )

3. ਸ਼ਾਬਾਸ਼ ! ਮੈਨੂੰ ਤੇਰੇ ਤੋਂ ਇਹੀ ਉਮੀਦ ਸੀ । ( ਵਿਸਮਿਕ ਦੀ ਕਿਸਮ ਲਿਖੋ । )

#### ਭਾਗ (ੲ) ਪ੍ਰਭਾਵਸ਼ਾਲੀ ਲਿਖਣ ਕੌਸ਼ਲ

1. ਹੇਠਾਂ ਦਿੱਤੇ ਚਿੱਤਰ ਨੂੰ ਵੇਖ ਕੇ 50-60 ਸ਼ਬਦਾਂ ਵਿੱਚ ਵਰਣਨ ਕਰੋ।

(7)



**ਭਾਗ (ਸ) ਪਾਠ-ਪੁਸਤਕ**

1. ਹੇਠ ਲਿਖੇ ਪ੍ਰਸ਼ਨ ਦਾ ਉੱਤਰ ਸੰਖੇਪ ਵਿੱਚ ਲਿਖੋ। (1×1=1)

ਪ੍ਰਸ਼ਨ- ਕਿਹੜੇ ਦਿਨ ਕੰਮ ਦੀ ਸ਼ੁਰੂਆਤ ਕਰਨੀ ਵਧੀਆ ਸਮਝੀ ਜਾਂਦੀ ਹੈ ?

2. ਹੇਠ ਲਿਖੇ ਪ੍ਰਸ਼ਨ ਦਾ ਉੱਤਰ 3-4 ਸਤਰਾਂ ਵਿੱਚ ਲਿਖੋ। (2×1=2)

ਪ੍ਰਸ਼ਨ - ਮੈਰੀ ਕਾਮ ਦਾ ਵਿਆਹੁਤਾ ਹੋਣਾ ਉਸ ਨੂੰ ਉਸ ਦੀ ਖੇਡ ਤੋਂ ਕਿਵੇਂ ਦੂਰ ਕਰਦਾ ਗਿਆ ?

3. ਹੇਠ ਲਿਖੇ ਪ੍ਰਸ਼ਨ ਦਾ ਉੱਤਰ ਵਿਸਥਾਰ ਨਾਲ ਲਿਖੋ। (5)

ਪ੍ਰਸ਼ਨ: 'ਆਪਣਾ-ਆਪਣਾ ਹਿੱਸਾ' ਪਾਠ ਵਿੱਚ ਕਿਸ ਦੇ ਮਰਨ ਪਿੱਛੋਂ ਉਸਦਾ ਵੱਡਿਆ ਕਰਨ ਦੀ ਗੱਲ ਕੀਤੀ ਗਈ ਹੈ ਤੇ ਕੌਣ ਇਸ ਸਭ ਲਈ ਰਾਜ਼ੀ ਨਹੀਂ ਸੀ ਤੇ ਕਿਉਂ ? ਵਿਸਥਾਰ ਵਿੱਚ ਲਿਖੋ।

4. ਕਦਰਾਂ-ਕੀਮਤਾਂ 'ਤੇ ਅਧਾਰਿਤ ਪ੍ਰਸ਼ਨ: (4)

ਪ੍ਰਸ਼ਨ: ਇੱਕ ਚੰਗੀ ਸ਼ਖ਼ਸੀਅਤ ਦਾ ਮਾਲਕ ਇਨਸਾਨ ਸਭ ਦੇ ਦਿਲਾਂ ਉੱਤੇ ਆਪਣੀ ਛਾਪ ਛੱਡ ਹੀ ਜਾਂਦਾ ਹੈ। ਤੁਸੀਂ ਇਸ ਗੱਲ ਨਾਲ ਕਿੰਨੇ ਕੁ ਸਹਿਮਤ ਹੋ ? ਆਪਣੇ ਵਿਚਾਰ ਲਿਖੋ ।



International School Award  
2014-2017



**Revision Paper Term-I (2017-2018)**

Grade: 8

Time Allowed: 2 ½ hrs

Subject: ICT

Max Marks: 40

**Instructions:**

1. Number all your answers carefully.
2. Give examples wherever possible.
3. MCQ's have to be numbered carefully and only the right option has to be written.

**Section- A**

**I. Answer the following questions in detail: (2\*4 = 8)**

1. What is a DBMS ? Name any two DBMS software.
2. What is the function of retouching tools? Name any two retouching tools.
3. Write some facts about Notes Tool and Horizontal Type Tool.
4. Define infomania. What is the term used for the person who suffers from infomania.

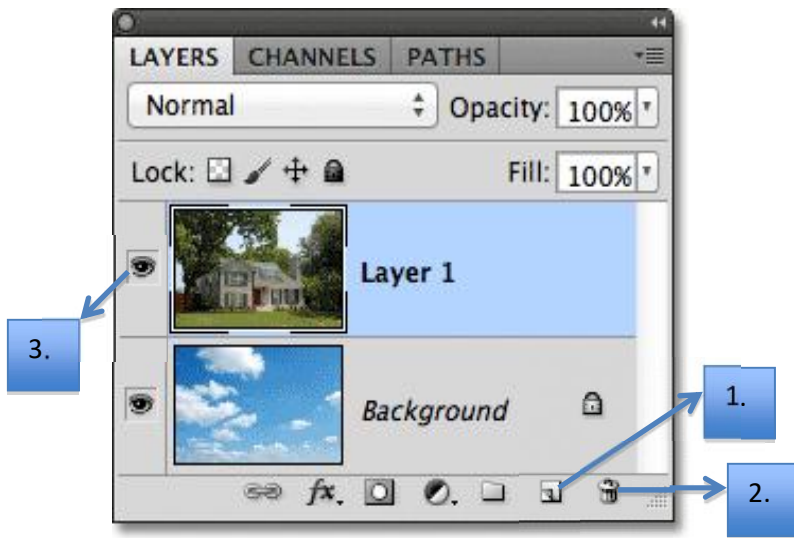
**II. Do as directed:**

5. Smitha has created the following employee database as told by her teacher. Now, her teacher has given some questions to solve. Help her to do so. (4)

EmployeeID	LastName	FirstName	EmailAddress	Telephone	DOB	DateHired
1	Mugh	Kash	kash@abc.com	5552221314	6/13/1980	1/20/2012
2	Reboot	Joe	joe@abc.com		7/14/1985	1/1/2012
*	(New)					

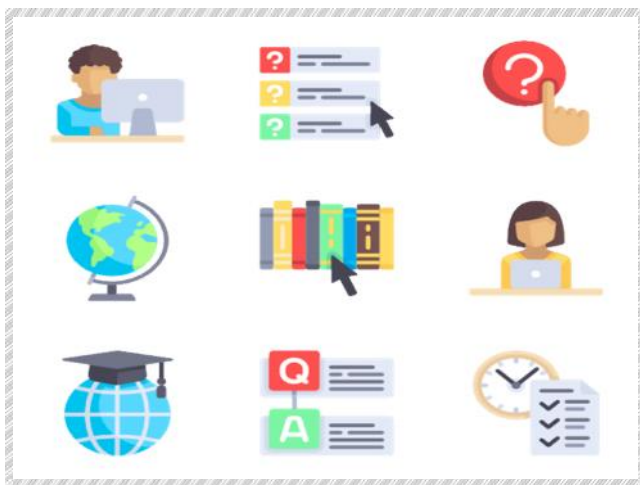
- a) Write the suitable data types for the each field shown in the database.
- b) What is the extension of the database saved in MS Access.

6. Rahul enjoys doing work in Photoshop very much. So, his computer teacher has given some questions to solve along with a picture, help him to do so. (4)



- Label the icons marked as 1,2,3 in the picture.
- What is the shortcut key to insert a layer?
- Write two features of a background layer.

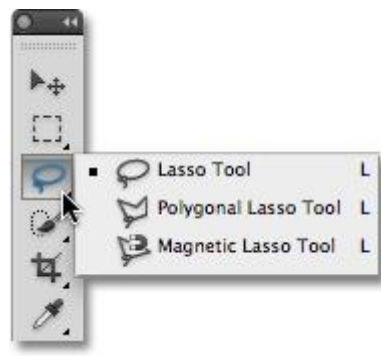
7. Look at the following picture carefully and answer the questions. (5)



- What is the generic term used for the shown icons?
- Write at least four advantages of the term discussed in the previous question.

7. Kavita is very sincere towards her responsibility regarding studies and always complete the work before the time. She likes computer subject very much and have learnt all the topics very well before the examinations. Now, her elder brother has given picture based questions to solve for the revision. Just help her in solving them. (4)

- Label all the five tools other than a Lasso tool.
- Write some facts about Lasso tool, Polygonal and Magnetic Lasso tool.



## Section- B

**1. State whether the following statements are true or false. Correct the false statements.**

**(0.5\*10 = 5)**

- 1) Datasheet view is used to enter fields, data types and description in the table.
- 2) Text data type is used to store long text like notes and descriptions.
- 3) Required data type is used to automatically fill value in the field when you add a new record to the table.
- 4) A query is used to extract data that meets specific criteria.
- 5) ICT stands for Information and Computing Technology.
- 6) The process of converting a digital signal into analog signal is called demodulation.
- 7) CTRL key is used to select the multiple layers in the Photoshop.
- 8) The default extension of a Photoshop file is .photo.
- 9) A new Photoshop layer is created above the selected layer.
- 10) Path selection tool is used to draw shapes other than the basic geometric shapes.

**2. Give one word for the following statements:**

**(0.5\*10 = 5)**

- 1) Feature of Microsoft Access that makes mathematical calculations with data easy.
- 2) A database object that displays data in printable form.
- 3) A data type which is used as an alternative name for the field to make field name more explanatory.
- 4) The Access object that provides a user-friendly format for entering data.
- 5) A private network that uses Internet protocols and technology.
- 6) The linking of two or more computers so that they are able to exchange information.
- 7) The tool used to select adjacent areas of the same color in an image.
- 8) The tool used to fill a selected portion or entire layer with transitions of one color to another.
- 9) Feature used to distort text into shape like an arc, a wave etc.
- 10) Name any one filter effect in the Photoshop.

## Section-C

**I. Choose the correct answer (MCQ) :**

**(0.5\*10 = 5)**

**1. Which one is not a data type available in Microsoft Access 2007?**

- |         |            |
|---------|------------|
| a) Text | c) Number  |
| b) Memo | d) Numeric |

**2. What is the maximum size of text data in Microsoft Access?**

- |        |        |
|--------|--------|
| a) 255 | c) 254 |
| b) 50  | d) 256 |

**3. Which command undoes sorting in an Access table?**

- |                     |                        |
|---------------------|------------------------|
| a) Remove all sorts | c) Delete all sorts    |
| b) Clear all sorts  | d) Eliminate all sorts |

**4. Information about an entity stored in a row.**

- |            |                  |
|------------|------------------|
| a) Field   | c) Record        |
| b) Program | d) None of these |

- 5. What type of network is suited for transferring songs from one mobile to another?**
- a) LAN
  - b) WAN
  - c) PAN
  - d) MAN
- 6. Which of the following means to duplicate?**
- a) Burn
  - b) Clone
  - c) Copy
  - d) None of these
- 7. This is an eight-wire connector that is commonly used to connect the network interface card with a hub.**
- a) Motherboard
  - b) RJ-45
  - c) Switch
  - d) Modem
- 8. This tool matches the texture, lighting, transparency and shading of the sampled pixels.**
- a) Healing Brush tool
  - b) Pattern Stamp tool
  - c) Spot healing brush tool
  - d) None of these
- 9. Which of the following is available under Marquee tools?**
- a) Rectangular Marquee tool
  - b) Single Row Marquee tool
  - c) Elliptical Marquee tool
  - d) All of these
- 10. This tool is used to lighten the pixels in an image.**
- a) Burn tool
  - b) Smudge tool
  - c) Dodge tool
  - d) Blur tool



**Revision Paper for session (HALF-YEARLY) (2017-18)**

**Topic Covered:**

1. Idea of force
2. Pressure
3. Combustion of flame
4. Cell
5. Light
6. Fossil fuels
7. How babies are formed?
8. Synthetic materials

Subject: Science

Teacher:

Name of the student:

Date:

Grade:VIII

Section:

Max. Marks: 40

M.Obtained:

**Read the instructions carefully**

**Section A carries 3 questions carrying one mark each**

**Section B carries 6 questions carrying two marks each**

**Section C carries 5 questions carrying three marks each**

**Section D carries 2 question carrying five marks each**

**SECTION A**

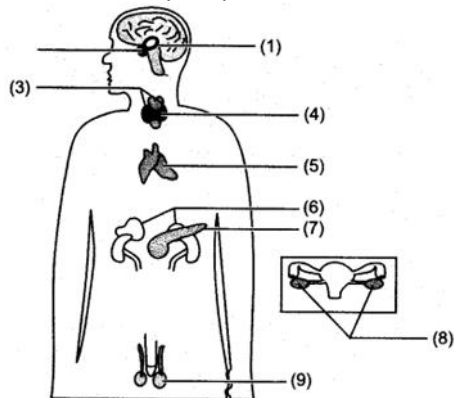
- Q1. What happens when the forces are applied on an object in the same direction?  
Q2. Why the cutting edge of a knife should be as sharp as possible?  
Q3. Name the compounds that causes acid rain.

**SECTION B**

- Q4. A rocket has been fired upwards to launch a satellite in its orbit. Name the two forces acting on the rocket just after leaving of the launching pad  
Q5. Why is it easy to push a nail into a wooden plank by the pointed end?  
Q6. Write four characteristics of a good fuel.  
Q7. 'Cells are the basic structural units of living organisms'. Explain.  
Q8. Do you think crude oil extraction affects the environment? Justify.  
Q9. Write the full forms of following:  
(a) PVC (b) MF (c) PS (d) PP

**SECTION C**

- Q10. Do liquid and gases exert pressure on the walls of container in all direction? Give example to justify your statement.  
Q11. What is the difference between an animal cell and a plant cell? (Any six)  
Q12. Label any six parts of the endocrine system.



Q13. As we know that eyes are the most delicate organ of our body and we must take care of our eyes. Suggest at least six measures of caring the eyes.

Q14. Since blind people cannot make use of their eyes, what other sense organs do you think are used by them to understand the outer world?

**SECTION D**

Q15. Fill the following table:

<b>HORMONE</b>	<b>FUNCTIONS</b>
Thyroxine	
Progesterone	
Insulin	
Testosterone	
Adrenaline	

Q16. Draw a well labeled diagram of ANIMAL CELL (OR) PLANT CELL.



International School Award  
2014-2017



**REVISION PAPER**  
**SUBJECT – SOCIAL STUDIES**  
**GRADE – 8**

**TIME ALLOTTED:**

**MAXIMUM MARKS: 40**

**Chapters Covered: HISTORY:** The establishment of company rule, The revolt of 1857 and Education and British rule. **GEOGRAPHY:** Major crops, Agriculture Types of farming and Natural resources **CIVICS:** Why do we need Parliament and The Indian Constitution

**GENERAL INSTRUCTIONS**

- ) Attempt all the questions.
- ) Questions from serial number 1 to 6 are of 1 mark each.
- ) Questions from serial number 7 to 11 are of 3 marks each.
- ) Questions 12 TO 14 are of 5 marks.
- ) Question 15 & 16 are of 4 marks.
- ) Attach the map inside your answer booklet.

**Q1. Very Short answer Type of questions.**

**(1×6=6)**

1. List few Indian goods that were demanded in Europe.
2. Who was Mangal Pandey? Where did he rebel?
3. Give examples of Ornamental products of Agriculture.
4. People from different cultural backgrounds attach different values to different resources. Give an example.
5. Define preamble
6. What is the characteristic of modern day democracy?

**Q2. SHORT ANSWERS AND QUESTIONS**

**(5×3=15)**

7. Explain the term Rule of Law introduced by the British.
8. Write three merits and demerits of Wood's Despatch.
9. Differentiate between large scale industries and small scale industries. Write any three.
10. Intensive subsistence agriculture is confined to densely populated countries of the world down three characteristics of intensive subsistence farming

11. The Preamble of Indian Constitution states: *We, the people of India*. What do these words suggest?

**Q3. LONG ANSWER AND QUESTIONS**

**(3×5=15)**

12. There were few causes that led to the revolt. Write few economic causes of the revolt of 1857.

13. Compare and contrast between two houses of Indian Parliament.

14. "*The value of resources is determined by its quality and quantity and its usefulness in the present times*". Elucidate

**Q4. Mark the following points on a political map of India. (2 marks)**

) One Indian states producing Wheat

) One Indian states producing Maize

**Q5. Mark the following points on a physical map of India. (2 marks)**

) Bareilly

) Faizabad



International School Award  
2014-2017

